

JL-80, JL100 Waste paper baler physical machine

เครื่องอัดแนวกระดาษแนวตั้ง



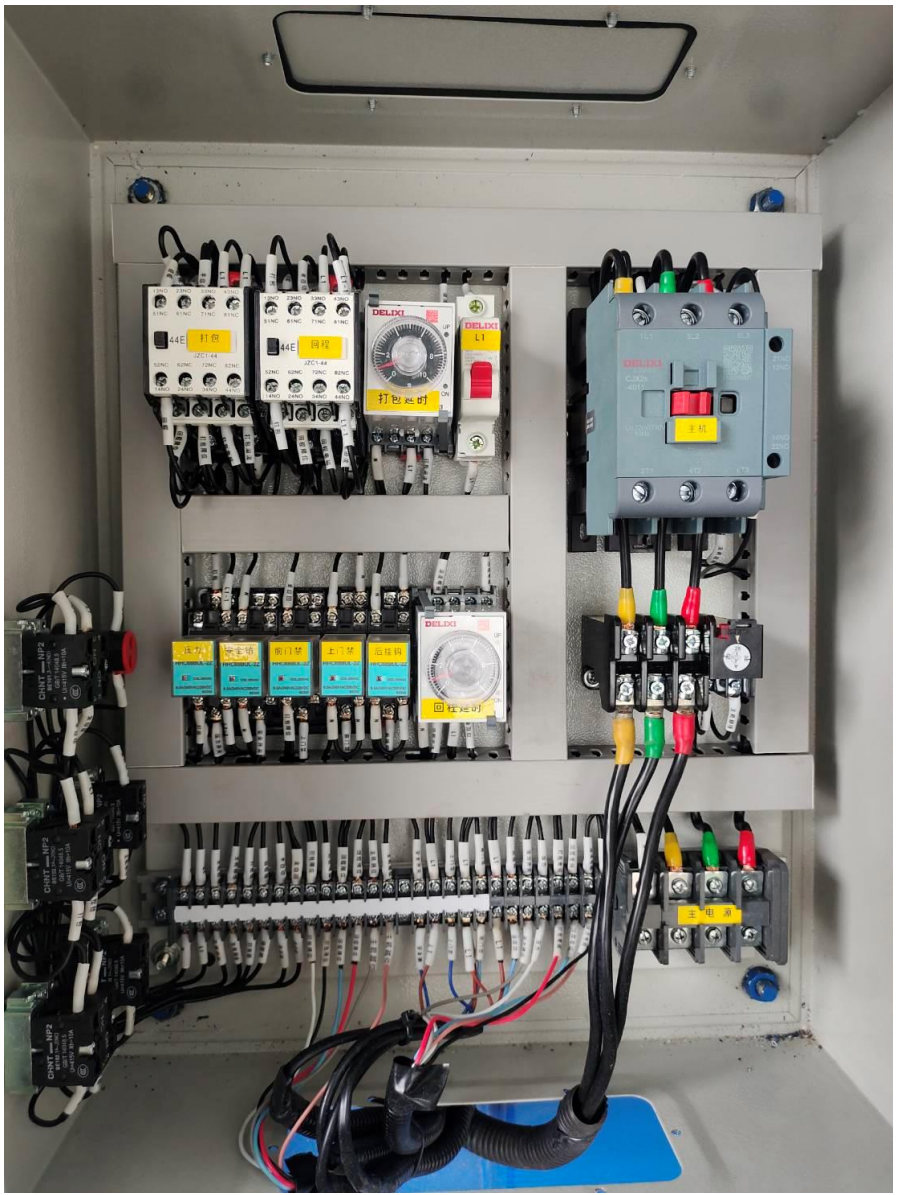
MODEL	JL-L80	JL-L100
Pressure	800KN	1000KN
Feeding gate Size (L*W) mm	1200 x 500mm	1200 x 500mm
Bale Size (W*H*L) mm	1200 x 800 x (300-1200)mm	1200 x 800 x (300-1200)mm
Bale Weight (kg)	300-350kg.	350-450kg
Power	15KW	15KW
Working Pressure	10 Mpa	10 Mpa
No. of Binding Wire	4-6	4-6
Machine Dimension	1700 x 1200 x 3900 mm.	1700 x 1200 x 3900

Usage and Feature

- This machine is mainly used in the packaging and recycling industry, it is used for packaging of waste paper from printing and carton factories, also used for packaging waste plastic, both new and old clothe, grass and straw etc.
- The machine has a wide range of application, and the electro-hydraulic valve control makes the operation easy and the maintenance convenient.
- The volume of the packaged waste is reduced, so that transportation costs are reduced, and easy to handle and process.
- This machine adopts single door and cushioned door design, automatic pressure relief is safer and more convenient, it is upgrade of traditional baler.
- The machine has automatic pressure regulating function, which can meet the pressure requirements of different materials.
- Double side guide presser plate design, effectively protect the cylinder and increase it's service life.
- The machine uses high precision oil cylinder and UN series oil seal
- The machine with automatic packaging and automatic output function.



ตู้คอนโทรล
แผงวงจรควบคุม
การทำงานของเครื่อง



ปุ่มควบคุม
การทำงานของ
เครื่อง

